

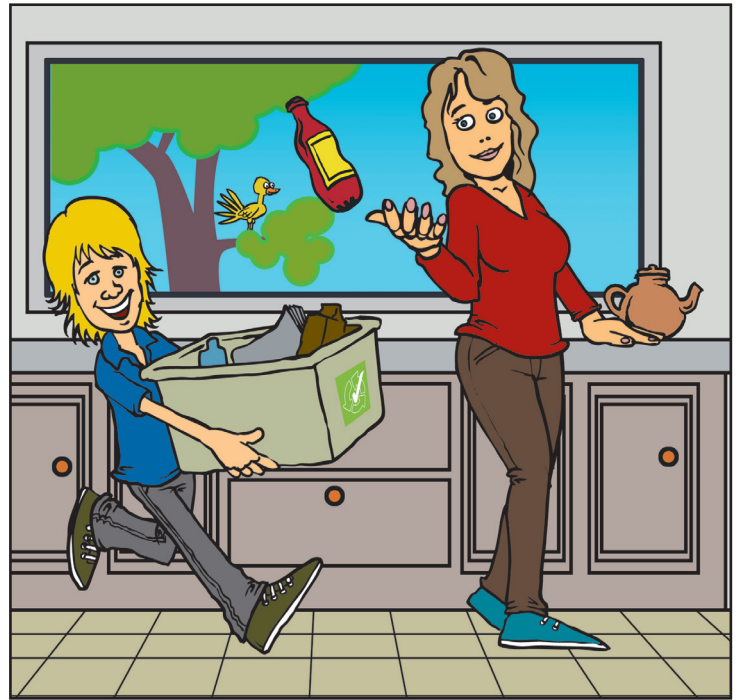
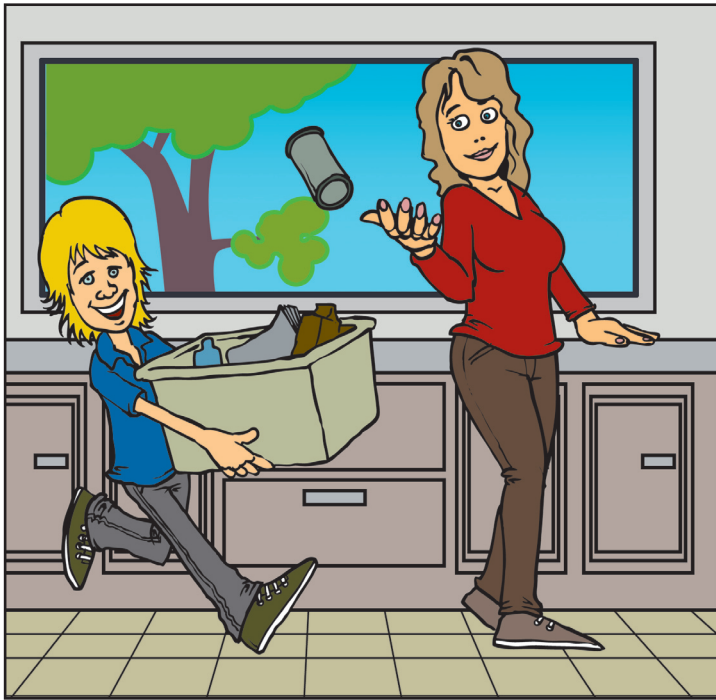
# RECYCLE MORE RECYCLE BETTER

with



## SPOT THE DIFFERENCE

There are 6 differences between these two pictures. Can you spot them all?



1. \_\_\_\_\_

2. \_\_\_\_\_

3. \_\_\_\_\_

4. \_\_\_\_\_

5. \_\_\_\_\_

6. \_\_\_\_\_

# RECYCLING WORD SCRAMBLE

These words are all things that you can put in your recycling bin at home. Can you unscramble them?

1) latsipc lotetb \_\_\_\_\_

2) almuiminu nac \_\_\_\_\_

3) slgas totleb \_\_\_\_\_

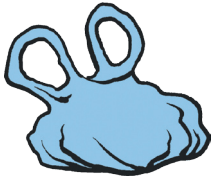
4) dacrdaobr \_\_\_\_\_

5) erppa \_\_\_\_\_

6) sleet anc \_\_\_\_\_

# RECYCLING MAZE

Only one of these items can be put in your home recycling bin. Follow the path to find which one it is.



Plastic bag



Mug+Plate



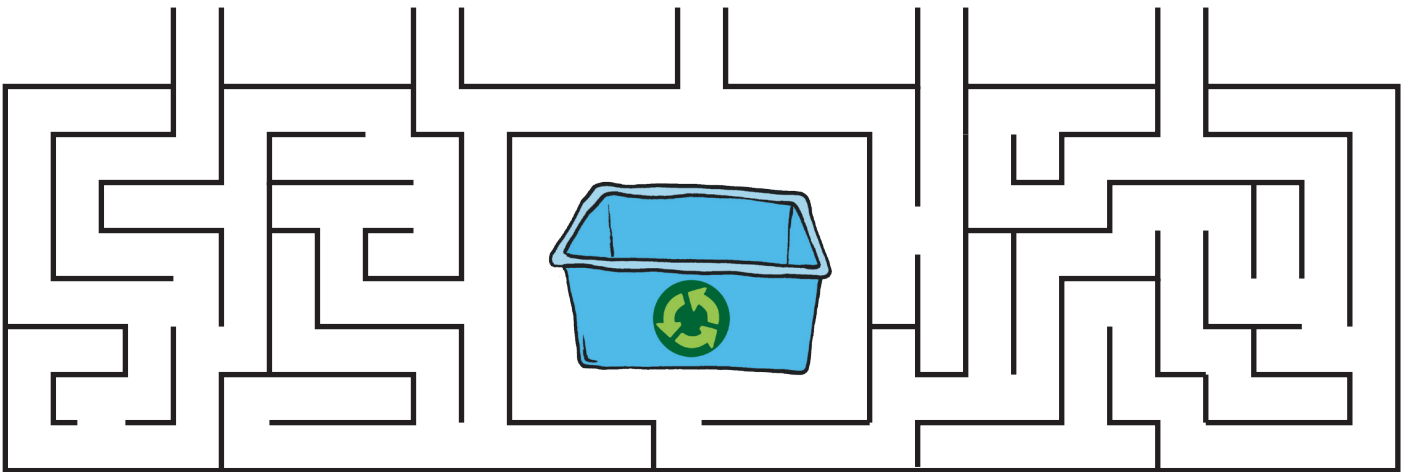
Food scraps



Drinking glass



Newspaper



To find out more about recycling in your local area please go to  
**[www.RecyclingNearYou.com.au](http://www.RecyclingNearYou.com.au)**  
 Or call 1300 733 712

ANSWERS (TURN UPSIDE DOWN):

SPOT THE DIFFERENCE: 1. Bottle instead of can 2. Logo on recycling crate 3. Bird in tree 4. Teapot on bench 5. Cupboard door handles are different 6. Mum's shoes change from brown to blue. WORD SCRAMBLE: 1. Plastic bottle 2. Aluminium Can 3. Glass Bottle 4. Cardboard 5. Paper 6. Steel Can RECYCLING MAZE: Newspaper