



For Planet Ark's **National Recycling Week**, we are answering the seven big recycling questions. We'll help you get it 'all sorted'.

Answering the Big Recycling Questions



What happens to my recycling?

- ➔ Kerbside bins go to facilities where fans, eddy currents, magnets, light beams and people sort the different materials ready for recycling.
- ➔ Around **80%** waste generated by home renovations can be recycled.



What are the benefits of recycling?

- ➔ **75%** of all of the aluminium ever produced is still in use today.
- ➔ **9.2** jobs are created in recycling for every 2.8 in landfilling.
- ➔ Australian Paper's new plant can process **80,000** tonnes of paper a year and provides **246** permanent green jobs.
- ➔ There is a positive relationship between recycling and life satisfaction.



Who pays for recycling?

- ➔ Rate payers cover the cost of kerbside recycling with fees in NSW ranging from \$30-\$145 a year.
- ➔ **29 million** printer cartridges and **10 million** phones have been recycled through the 'Cartridges 4 Planet Ark' and MobileMuster programs, with the manufacturers covering the costs.





What are the most common recycling mistakes?

- Councils in Australia say the most common mistakes made by residents are:
 - 1 Putting plastic bags and soft plastics in the recycling
 - 2 Putting recyclable items in the garbage bin and
 - 3 Contaminating recycling with food.



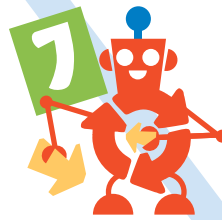
How do we make recycling at work, work?

- Location! Paper recycling rose from 28% with one bin per office to **94%** when paper trays were located on desks.
- Finding the right equipment like bins and balers helps reduce contamination and reduce costs.



How does Australia's recycling compare to the rest of the world?

- **51%** of household waste in Australia is recycled compared to 65% in Germany and 57% in Belgium.
- **Less than 1%** of waste in Australia is incinerated compared to 50% in Sweden.



What is the future of recycling?

- The new Australian Recycling Label will provide manufacturers and customers with clear recycling information to reduce confusion.
- **In 2017** NSW is set to implement a container deposit scheme with the ACT and Queensland likely to follow.



For more information visit
RecyclingWeek.PlanetArk.org
 or call 1300 733 712



Associate
Sponsors

